




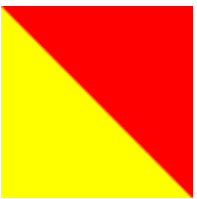
2026 Notice of Race & Sailing Instructions **A Scow, E Scow, C Scow, MC Scow, Melges 15 & Melges 24**

Preamble – The notation '[NP]' in a rule means that a boat may not protest or request redress under this rule. This changes *Rules* 60.4(a) and 61.3 as stated below. The notation '[DP]' in a rule means the penalty for breaking this rule may, at the discretion of the jury, be more or less than a single disqualification. This changes *Rule* 60.5(c).

1 RULES

- 1.1 Races will be governed by the rules as defined in *The Racing Rules of Sailing* (RRS) and by the US Sailing Prescriptions. Changes to the RRS are present throughout this document.
- 1.2 The US Sailing Prescription to RRS 63.1(b) is deleted.
- 1.3 [DP] All *rules* except the rules of Part 1, Part 2, and Rule 31.
- 1.4 In addition to other rules changed in this document, the following racing rules are changed:
 - 1.4.1 RRS 60.4(a)(2) is changed to read, "if it is from a boat that alleges a breach of a rule of Part 2 or rule 31, but she was not involved in it and did not see the incident, or"
 - 1.4.2 RRS 60.4(a) adds, "(4) if the protest is by a boat and is based on a rule with the notation [NP]."
 - 1.4.3 RRS 60.5(c) adds, "(5) the protest is based on a rule with the notation [NP]."
- 1.5 Appendix T – Arbitration shall apply.
- 1.6 RaceSense
 - 1.6.1 Vakaros RaceSense will be used for all series races. Additional rules are changed in this document to accommodate RaceSense.
 - 1.6.2 For A Scow, E Scow, Melges 15, and Melges 24, Each boat shall have a Vakaros Atlas 2 or Edge mounted within 6 inches of the aft side of the mast, perpendicular to a line from the center of the bow to the center of the transom.
 - 1.6.3 For C Scow and MC Scow, each boat shall have a Vakaros Atlas 2 or Atlas Edge mounted on centerline with a clear view of the sky, perpendicular to a line from the center of the bow to the center of the transom. The boat shall facilitate measurement of the distance from the bow of their boat to the device for entry into the club's records and shall notify the club secretary before further racing if the mounted distance changes.
 - 1.6.4 No other electronic, metallic, or magnetic devices shall be mounted above or within 6 inches of the boat's Atlas 2 or Atlas Edge.
 - 1.6.5 Each boat's device shall have an active RaceSense pass available for purchase at www.vakaros.com/pages/passes.

- 1.6.6 Each boat’s device and any spare devices the boat may use shall be presented to the RC before participating in any race to be added to the RaceSense network. MC and C sailors shall have their bow offset measured before racing. Multiple opportunities for checking in devices will be offered prior to the beginning of racing. If presenting a device the day of a race, a representative from the boat should arrive at least 90 minutes prior to a scheduled warning. If RC is already on the water (60)min prior races), and unable to be checked in properly, the boat will be protested by the race committee.
- 1.6.7 Each boat shall keep their Atlas 2 or Edge updated (latest firmware & GPS Version) and calibrated (compass) throughout the season as necessary.
- 1.6.8 Unless directed to reset the device, each boat shall keep their Atlas 2 or Edge powered on while in the racing area and throughout all racing.
- 1.6.9 It is a boat’s responsibility to ensure their Atlas 2 or Edge is configured with a profile to display class compliant information. All classes are permitted to view distance to line when RaceSense is in use.
- 1.6.10 RaceSense information is freely available to all boats. This adds to RRS 41.
- 1.6.11 If Flag R (reset) is displayed, boats shall power down their Vakaros device, wait 30 seconds, then power up their device. Note: It often takes more than a minute for devices to re-join the RaceSense network.
- 1.6.12 If Flag O (old school) is displayed before a race starts, all RaceSense changes are deleted for that race and all descriptions of “Vakaros device mounted to” are changed to “the course side of.”
- 1.6.13 Flag Reference [NP]

	
R Flag	O Flag

2 NOTICES TO COMPETITORS

Notices to competitors will be posted on the official notice board at lgyc.com/racing, then clicking through to the individual class and series.

3 CHANGES TO SAILING INSTRUCTIONS

- 3.1.1 Any change to the sailing instructions will be posted on the official notice board no later than 4 hours before it will take effect. Any change to the schedule, format, or any other major change will be made not later than 48 hours before it will take effect. No change to the SIs will be announced on the water. Any change to the schedule or major change to the SIs or SI Appendices must be approved by the Rear Commodore or another flag officer.

4 SIGNALS MADE ASHORE

- 4.1 When the race committee signal boat is at the pier, signals made ashore will be made from the signal vessel or the Yacht Club flagstaff yard arm. When the signal boat is off her moorings, signals made ashore will be displayed from the Yacht Club flagstaff yard and also from the race committee signal vessel.

- 4.2 When flag AP is displayed ashore, “1 minute” is replaced with “not less than 30 minutes” in the race signal AP.
- 4.3 During the Spring and Fall Series, all Class E and Class MC boats shall race with flotation panels installed for all races. Flag F may not be displayed.
- 4.4 For Series A, B and C, when flag F is displayed ashore at least one hour before the first scheduled warning signal, all Class E and Class MC boats shall race with flotation panels installed.

5 ELIGIBILITY

- 5.1 A boat that has registered on the Yacht Club Registration and Scoring System at Club Spot (www.theclubspot.com) is eligible to race provided her owner/charterer and helmsperson are Lake Geneva Yacht Club members in good standing and the boat conforms to her class rules.
- 5.2 A boat in Class A, E, C or X shall display the Yacht Club designator letter “I” on her mainsail with its size and placement conforming to her class rules.
- 5.3 When during the sailing season a competitor acquires a replacement boat and registers it per SI 5.1, the scores of the replacement boat and the replaced boat will be combined.
- 5.4 [NP] It is requested that Boats check in with the Race Committee Signal Boat prior to the warning signal of the boat’s first race each day. Seeing “Joined RaceSense Event” on a boat’s Vakaros device is considered checking in with the Race Committee Signal boat.

6 SCHEDULE OF RACES

- 6.1 The schedule of races shall be as described in the Race Calendar at <https://lgy.com/multiple-race-calendars/>.
- 6.2 In the schedule of races shown in the Race Calendar at <https://lgy.com/multiple-race-calendars/>:
 - 6.2.1 When more than one class is scheduled to race, the order of their warning signals will be as shown in the Race Calendar;
 - 6.2.2 When the race schedule is interrupted by an incident after the first warning signal is displayed, the order of class flags may be revised at the discretion of the race committee and will take precedence over the order in which class indicators and course signal are displayed on the signal boat course board;
 - 6.2.3 The race committee will determine the order and timing of warning signals for the second of the back-to-back races.
- 6.3 Restrictions on times of warning signals, are as follows:
 - 6.3.1 For all races scheduled before 12:00 noon, no warning signal for any class will be made later than 11:10 a.m.
 - 6.3.2 For all races scheduled between 12:00 noon and 3:00 p.m., warning signals will not be made later than 3:00 p.m.;
 - 6.3.3 For all races scheduled between 3:00 p.m. and 4:45 pm, warning signals will not be made later than 7:00 p.m.; and
 - 6.3.4 For all races scheduled after 4:45 p.m., no warning signal for any class will be made later than 7:15 p.m.
- 6.4 Races may be removed from the schedule only by the Rear Commodore or another flag officer. The decision will be posted on the official notice board.

- 6.5 The Sheridan Prize race may be canceled only by written authorization of the Sheridan Prize Trustees.

7 CLASS INDICATORS AND CLASS FLAGS

- 7.1 Class indicators on the course board will be black class initials or insignia on white boards and displayed with the course signals.
- 7.2 Class flags will be a flag displaying the class insignia.

8 RACING AREA

- 8.1 The racing area is the navigable waters of Geneva Lake.

9 COURSES

- 9.1 Courses are described in SI Appendix 1, Courses and Course Signals. Course lengths are shown in SI Appendix 2, Suggested Course Lengths in Statute Miles and Time.
- 9.2 Course signals will be black letters and numerals displayed on orange boards or on a white board displayed by a race committee signal vessel course board.
- 9.3 When an offset mark is used at the windward mark and the offset mark or the windward mark is missing or out of position, the remaining mark shall be rounded to port. The mark missing or out of position is no longer a mark.
- 9.4 When one class is racing and course W, WA, L or LA is signaled the leeward gate marks shall be the same marks as starting line.
- 9.5 When multiple classes are scheduled, the gate shall be to windward of the starting line.
- 9.6 The start/finish line of all modified courses is open. Racing boats sailing any leg of the course may pass through the line.
- 9.7 For long distance races:
 - 9.7.1 the course for the Sheridan Prize race will be as stated by the Sheridan Prize Trustees.
 - 9.7.2 the courses for the Wacker Trophy race and the Melges 24 Length of the Lake race will be determined by the race committee.
 - 9.7.3 the course for the Cameron Trophy race will be as stated in its deed of gift.

10 MARKS

- 10.1 Marks will as described below:
 - 10.1.1 Windward marks (except for short course windward marks) will be orange shapes
 - 10.1.2 Short course windward marks will be a yellow shape
 - 10.1.3 When one class is scheduled in a time slot, starting lines and gates will be yellow shapes
 - 10.1.4 When multiple classes are scheduled in a time slot, starting lines will be (yellow) shapes and gates will be (orange) shapes.
 - 10.1.5 If a new mark is laid and the original remains in place, the new mark will be a green shape.

11 THE START

- 11.1 Races will be started as provided in RRS 26 except as modified in SIs 11.2, 11.3, and 11.4.
- 11.2 Flag I, flag Z, flag Z with I, flag U and the black flag will not be used as preparatory signals. This changes RRS 26.

11.3 The starting line will be between:

11.3.1 when one fleet is scheduled in a time window, between Vakaros devices mounted to two yellow marks.

11.3.2 when more than one fleet is scheduled in a time window:

- a) between Vakaros devices mounted to two (yellow) marks
- b) between a Vakaros device mounted to a staff displaying an orange flag and a Vakaros device mounted to a (yellow) shape.

11.4 Starting and Recall Signals

11.4.1 RRS 26 is changed to, “Races will be started by RaceSense. Times shall be taken from the timer on a boat’s Vakaros unit.

11.4.2 Race signals is changed so any visual or sound signals made by the signal boat for the following signals are a courtesy. The signals are replaced as follows:

Signal	Replaced this time on Vakaros unit:	Meaning
Class Flag	5:00	5 minutes until the start
Preparatory Signal	4:00	4 minutes until the start
Preparatory Signal Removed	1:00	1 minute until the start
Class Flag Removed	0:00	Starting Signal
Individual Recall (flag X)	OCS with Red Lights	Your boat was identified on the course side at the start and you must comply with RRS 29.1 (restart)

11.5 Boats whose warning signal has not been made shall not enter the starting area during the starting sequence for other races. The starting area is rectangular and extends approximately 50 yards along the extensions of the starting line and approximately 50 yards to windward and to leeward of the starting line and it’s extensions.

11.6 A boat not starting within 4 minutes after her starting signal will be scored DNS (Did Not Start) by the race committee without a hearing. This changes RRS A4 and A5.

11.7 Not used

11.8 When a race is abandoned to be restarted, the time of the next warning signal for the recalled class will be determined by the race committee.

11.9 For Class MC:

11.9.1 No race will be started when the race committee observes wind gusts of 21 mph or higher. The race committee may postpone the start and may endeavor to advise the fleet via VHF radio of their intention to remove the postponement if the wind decreases below the above limits. The race committee will allow reasonable time as needed, at least 30 minutes if boats are ashore and need to launch, for the boats to

sail to the starting area after radio notification of sailable conditions has been made.

- 11.9.2 After a race has been started, if the race committee observes gusts of 23 mph or higher, the race committee will abandon the race by displaying flags N over A above the MC class flag with sound signals. This changes RRS 32.1 and Race Signals.

12 CHANGING THE NEXT LEG OF THE COURSE OR SHORTENING THE COURSE

- 12.1 A course may be shortened only if 3 combined windward and leeward legs will be completed after shortening. This changes RRS 32.1
- 12.2 To change the next leg of the course, the race committee will move the mark before any boat begins the leg or will lay a new mark and remove the original mark as soon as practicable.
- 12.3 Changes less than 10 degrees and less than 10% of length completed before any boat begins the leg may not be signaled.
- 12.4 Changes in direction and length more than 10 degrees, more than 10%, or that may be made after a boat begins the leg will be signaled according to RRS 33 before any boat begins the leg.

13 THE FINISH

- 13.1 The finishing line will be between:
- 13.1.1 When one fleet is racing in a time slot:
- For upwind finishes, between a Vakaros device attached to a staff displaying a blue flag and a Vakaros device mounted to a nearby orange mark.
 - For downwind finishes, between Vakaros devices mounted to yellow start/finish marks.
- 13.1.2 When multiple fleets are racing in a time slot:
- For upwind finishes, between a Vakaros device attached to a staff displaying a blue flag and a Vakaros device mounted to a nearby orange mark.
 - For downwind finishes, between Vakaros devices mounted to the yellow start/finish marks.
- 13.2 If the race committee is absent when a boat finishes, she should round the finishing mark, then report her finishing time and her position in relation to nearby boats to the race committee at the first reasonable opportunity.

14 PENALTY SYSTEM

- 14.1.1 For the A, E, C, MC, M15 and M24 classes, RRS41.1 is changed so that a Two-Turns penalty is replaced by a One-Turn Penalty.

15 TIME LIMITS

- 15.1 Race Time Limits (see RRS 35) for series races are shown in SI Appendix 3, Race Time Limits.
- 15.2 The Finishing Window is a 15 minute time limit for boats to finish after the first boat sails the course and finishes within the Race Time Limit. Boats failing to finish within the Finishing Window will be scored Did Not Finish (DNF) without a hearing. This changes RRS 35, A4, A5 and A9.
- 15.3 The Race Time Limit for the Sheridan Prize race is 6 hours. The time limit for the Wacker Trophy race is 20 minutes per mile of the course.
- 15.4 All Race Time Limits and the Finishing Window Time Limit expire at sunset as defined by the US Naval Observatory.

16 PROTESTS AND REQUESTS FOR REDRESS

- 16.1 A boat that finishes and intends to deliver a protest involving an incident that occurs in the racing area is requested to notify the race committee vessel at the finishing line of her intention promptly after finishing.
- 16.2 Protest forms are available online at <https://bit.ly.2025hearing>. Protests and requests for redress or reopening shall be delivered to the race office at <https://bit.ly/2025hearing>.
- 16.3 The Yacht Club Chief Judge shall schedule the date, time and location of hearings and post such notice on the official notice board. Hearings may be held via online videoconference.

17 SCORING

- 17.1 For a race to be scored, at least three boats must be in the racing area close enough to the starting line to start at the starting signal at the time of the warning signal, except that only one boat is required for the Sheridan Prize race and two boats are required for Class M24 - Spring, B and Fall Series races. Boats known to the race committee as not in compliance with SI 5.1 shall be excluded when determining minimum fleet size.
- 17.2 Appendix A Applies except as modified below.
- 17.3 Boats scored DNF, DNS and DNC will be scored as follows:
 - 17.3.1 Did Not Start (DNS), Did Not Finish (DNF), Retired (RET), or Disqualified (DSQ) - Boats that start but fail to finish within the Finishing Window as defined in SI 15.2 or that after starting retire or are disqualified, will be scored points equal to the number of boats that finished the race plus one (1) point. This changes RRS 35, A4 and A9.
 - 17.3.2 Did Not Come to the starting area (DNC) - Boats that come to the starting area but do not start will be scored points equal to the number of boats that sailed in any race of the series plus two(2) points. This changes RRS 35, A4 and A9.
- 17.4 Except in an emergency, boats not in compliance with SI 5.1 shall be scored DNC without a hearing. This changes RRS 35.
- 17.5 Average points for travel regattas
 - 17.5.1 For up to **4 races** in a series, a boat's person in charge who is the parent or primary chaperone of a youth sailor and attends a youth sailing event in which the child is sailing, or a person in charge who is a member of the Race Committee, Jury, Umpire Team, Organizing Authority, or Technical Committee, or is competing in a Melges 14, 15, or 24 or ILYA Sanctioned Class Championship, National Championship, or Invitational Regatta that precludes her ability to participate in LGYC Club racing shall receive points equal to the average, to the nearest tenth of a point (0.05 to be rounded upward), of her points in all races she sailed in the series, except races on the final weekend of sailing, provided a request for average points was received by the Rear Commodore or Fleet Captain prior to the scheduled race(s) in which the average points are requested. The request shall be approved if the requirements of this rule are met. This changes RRS A2.3.
 - 17.5.2 Eligible events:
 - a) Coach, Parent or primary chaperone of junior sailor at a regatta
 - b) RC at a regatta
 - c) Jury at a regatta
 - d) Umpire at a regatta

- e) Organizing Authority at a regatta
- f) Technical committee at a regatta
- g) Melges 14, 15, & 24 or ILYA Sanctioned Class Regattas you compete in that are:
 - a. Class sanctioned Championships
 - b. National Championships
 - c. ILYA Invitational and Championship
- h) Points you get (up to 4 races)
 - a. Average of the races you sail (not races you miss)
 - b. Averaged to the nearest 0.1 (0.05 rounded upward)
 - c. The average doesn't include the last day of racing. This means you don't have to do math on the floating average as the series is wrapping up and you are fighting for places overall
 - d. If you requested average and racing doesn't happen, the races don't count toward your 4 eligible

**You have to request from the Rear Commodore or Fleet captain before the races happen. There's no option for them to deny it if you meet the conditions above.*

17.6 Each boat's series score is determined by excluding her worst scores, subject to RRS 90.3(b). Every boat will receive the same number of excluded scores based on the total number of races completed in the series by the fleet. A race is completed if scored; see RRS 90.3(a). The number of excluded races is based on each fleet's chosen throw-out percentage of 20%, 25% or 30% as noted below. The number of races to be excluded is rounded down to the nearest integer. The tables below show the number of excluded races for each class.

17.6.1 Classes A, E, M24

Races	20% exclusion:
5-9	1
10-14	2
15-19	3
20-24	4
25-29	5
30-32	6

17.6.2 Class MC

Races	25% exclusion:
4-7	1
8-11	2
12-15	3
16-19	4
20-23	5

17.6.3 Class C, M15

Races	30% exclusion:
4-6	1
7-9	2
10-13	3

14-16	4
17-19	5
20-23	6
24-26	7
27-29	8
30-33	9

18 SAFETY

- 18.1 When races will be postponed or abandoned due to expected or actual severe weather, the race committee will attempt to broadcast its decision on VHF radio channel 18. The race committee may also display a flashing light on race committee vessels. Visual race signals govern any postponement or abandonment.
- 18.2 Not used.
- 18.3 When on the water during the Spring and Fall Series, competitors in ALL Classes shall wear adequate personal flotation while afloat as described in RRS 40.1 and RRS 40.2(b). Flag Y may not be displayed. This changes RRS 40.2(b).
- 18.4 Boats leaving the racing area before the end of racing on any day shall notify the race committee as soon as possible.
- 18.5 At least two race committee vessels must be in the race area at the Warning Signal with a combined total of three race committee members on board. If at least two race committee vessels with a combined total of four combined people for safety are not in the race area at the time of the Warning signal the race shall be abandoned or postponed until this requirement is satisfied.
- 18.6 Boats capsized may accept assistance without penalty. This reinforces RRS 1.1 and 41 (a).

19 COMMUNICATION

- 19.1 Boats shall have a working VHF radio on board and monitor VHF 18 to receive race committee transmissions intended for all boats.
- 19.2 The race committee may, as a courtesy, communicate to the fleets via VHF radio the race course, wind direction, distance and starting sequence or other pertinent information. It may also communicate change of course and in certain conditions notify boats to seek safe harbor.
- 19.3 The race committee will use VHF radio channel 18.
- 19.4 While racing, except in an emergency or for medical necessity, a boat shall not make voice or data transmissions and shall not receive voice or data communication that is not available to all boats or permitted by SI 20.

20 COACHING

- 20.1 Coaching during the race is permitted during Spring, B, C and Fall series racing. RRS 41 is changed to allow coaching.

21 PRIZES

- 21.1 Trophies and prizes will be awarded in accordance with SI Appendix 4.

22 DISCLAIMER OF LIABILITY

Competitors participate in Yacht Club races entirely at their own risk. See RRS 3, Decision to Race. The organizing authority will not accept any liability for material damage or personal injury or death sustained in conjunction with or prior to, during, or

after races.

23 Insurance

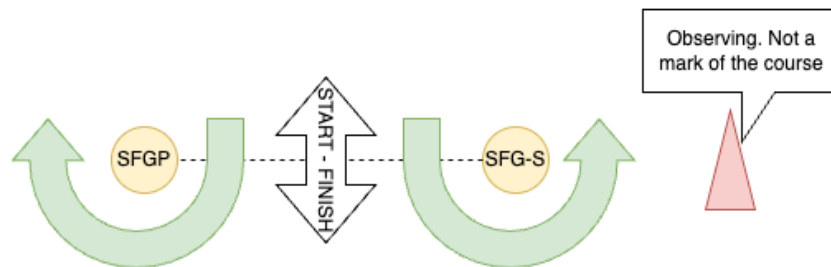
Each participating boat shall be insured with valid third-party liability insurance with a minimum cover of \$300,000 per incident.

Appendix 1 - Courses

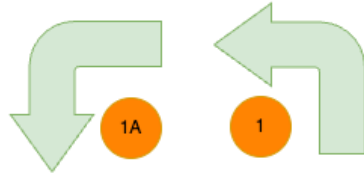
- 1 Course and Course Signals** The race committee may set any of the following courses: **Windward-Leeward (W or L), Windward-Leeward with Offset (WA or LA).**
- 2 Visual course signals will be displayed on boards in rows in a framework above the Flagship cabin or on a white or black board. When displayed above the Flagship cabin, the top row will show class designators; the middle row will show the courses W, L, WA, or LA in black letters on an orange background. The bottom row will show the number of windward legs in black numerals on an orange background.**
- 3 If for class MC a minus “(-)” is posted after the number of laps or legs, then there will be a shorter yellow windward mark for that fleet. Upwind finishes will be at the longer mark. The shorter yellow mark is NOT a mark of the course for any other classes. When a race committee vessel other than Flagship II is the signal boat, course signals will be displayed on a white or black board.**



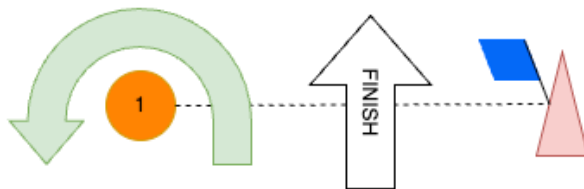
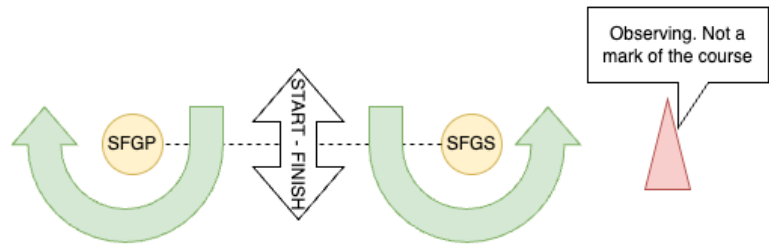
L Course - One Fleet Racing
L2 - Start - 1 - SFGS/SFGP - 1 - Finish
L3 - Start - 1 - SFGS/SFGP - 1 - SFGS/SFGP - 1 - Finish
L4 - Start - 1 - SFGS/SFGP - 1 - SFGS/SFGP - 1 - SFGS/SFGP - 1 - Finish



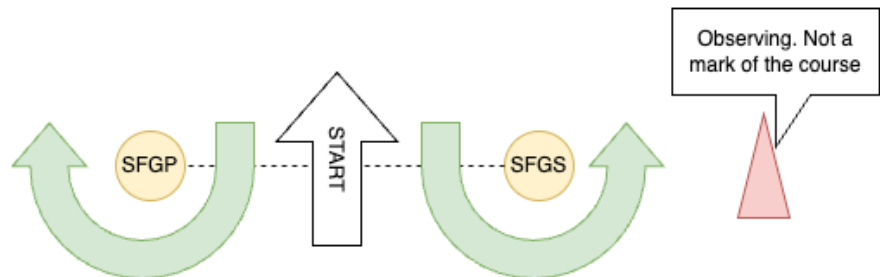
“PLEASE NOTE: These course diagrams are for example purposes only. The course, mark, start line and finish line locations are determined by the Race Committee in accordance with the RRS and LGYC NOR & SI.”



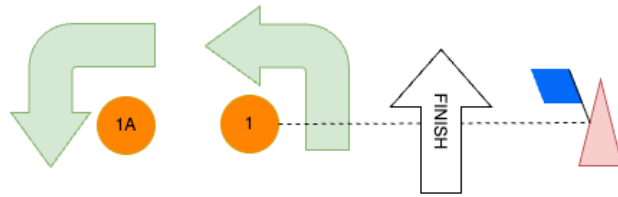
LA Course - One Fleet Racing
 LA2 - Start - 1 - 1A - SFGS/SFGP - 1 - 1A - Finish
 LA3 - Start - 1 - 1A - SFGS/SFGP - 1 - 1A - SFGS/SFGP - 1 - 1A - Finish
 LA4 - Start - 1 - 1A - SFGS/SFGP - 1 - 1A - SFGS/SFGP - 1 - 1A - SFGS/SFGP - 1 - 1A - Finish



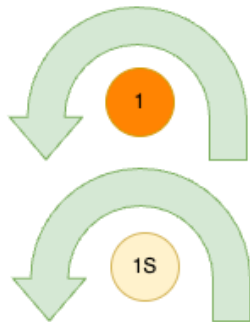
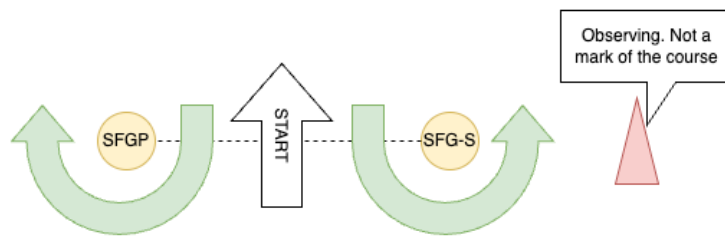
W Course - One Fleet Racing
 W2 - Start - 1 - SFGS/SFGP - Finish
 W3 - Start - 1 - SFGS/SFGP - 1 - SFGS/SFGP - Finish
 W4 - Start - 1 - SFGS/SFGP - 1 - SFGS/SFGP - 1 - SFGS/SFGP - Finish
 W5 - Start - 1 - SFGS/SFGP - 1 - SFGS/SFGP - 1 - SFGS/SFGP - 1 - SFGS/SFGP - Finish



“PLEASE NOTE: These course diagrams are for example purposes only. The course, mark, start line and finish line locations are determined by the Race Committee in accordance with the RRS and LGYC NOR & SI.”

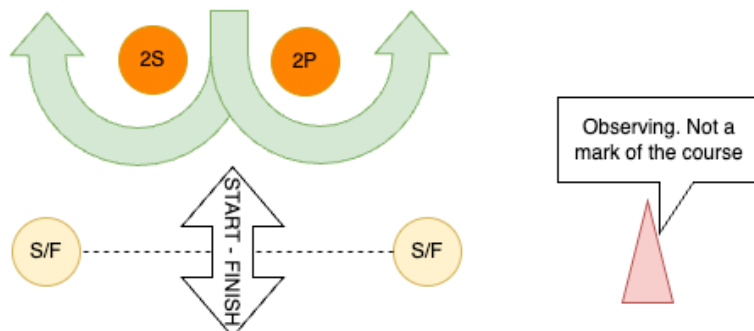


WA Course - One Fleet Racing
 WA2 - Start - 1 - 1A - SFGS/SFGP - Finish
 WA3 - Start - 1 - 1A - SFGS/SFGP - 1 - 1A - SFGS/SFGP - Finish
 WA4 - Start - 1 - 1A - SFGS/SFGP - 1 - 1A - SFGS/SFGP - 1 - 1A - SFGS/SFGP - Finish
 WA5 - Start - 1 - 1A - SFGS/SFGP - 1 - 1A - SFGS/SFGP - 1 - 1A - SFGS/SFGP - 1 - 1A - SFGS/SFGP - Finish

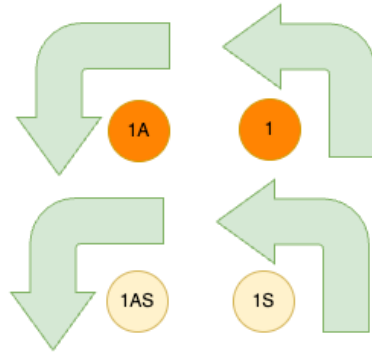


L Course - Multiple Fleets Racing
 L2 Start - 1 - 2S/2P - 1 - Finish
 L3 Start - 1 - 2S/2P - 1 - 2S/2P - 1 - Finish
 L4 Start - 1 - 2S/2P - 1 - 2S/2P - 1 - 2S/2P - 1 - Finish

L- Course - Multiple Fleets Racing
 L2- Start - 1S - 2S/2P - 1S - Finish
 L3- Start - 1S - 2S/2P - 1S - 2S/2P - 1S - Finish
 L4- Start - 1S - 2S/2P - 1S - 2S/2P - 1S - 2S/2P - 1S - Finish

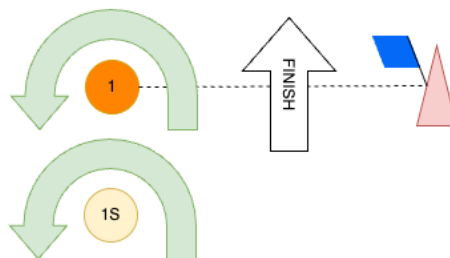
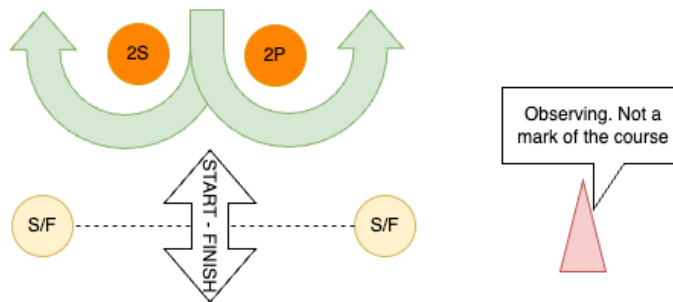


“PLEASE NOTE: These course diagrams are for example purposes only. The course, mark, start line and finish line locations are determined by the Race Committee in accordance with the RRS and LGYC NOR & SI.”



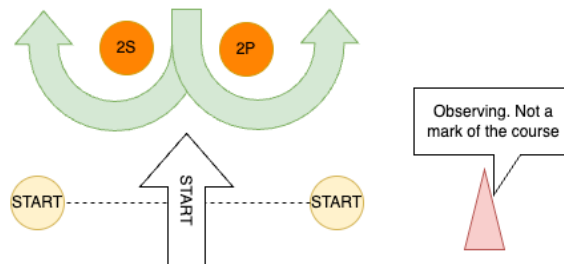
LA Course - Multiple Fleets Racing
 LA2 Start - 1 - 1A - 2S/2P - 1 - 1A - Finish
 LA3 Start - 1 - 1A - 2S/2P - 1 - 1A - 2S/2P - 1 - 1A - Finish
 LA4 Start - 1 - 1A - 2S/2P - 1 - 1A - 2S/2P - 1 - 1A - 2S/2P - 1 - 1A - Finish

LA Course - Multiple Fleets Racing
 LA2- Start - 1S - 1AS - 2S/2P - 1S - 1AS - Finish
 LA3- Start - 1S - 1AS - 2S/2P - 1S - 1AS - 2S/2P - 1S - 1AS - Finish
 LA4- Start - 1S - 1AS - 2S/2P - 1S - 1AS - 2S/2P - 1S - 1AS - 2S/2P - 1S - 1AS - Finish

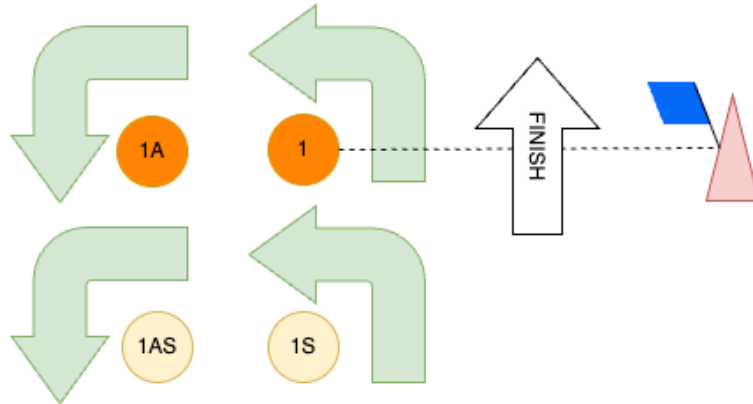


W Course - Multiple Fleets Racing
 W2 Start - 1 - 2S/2P - Finish
 W3 Start - 1 - 2S/2P - 1 - 2S/2P - Finish
 W4 Start - 1 - 2S/2P - 1 - 2S/2P - 1 - 2S/2P - Finish
 W5 Start - 1 - 2S/2P - 1 - 2S/2P - 1 - 2S/2P - 1 - 2S/2P - Finish

W Course - Multiple Fleets Racing
 W2- Start - 1S - 2S/2P - Finish
 W3- Start - 1S - 2S/2P - 1S - 2S/2P - Finish
 W4- Start - 1S - 2S/2P - 1S - 2S/2P - 1S - 2S/2P - Finish
 W5- Start - 1S - 2S/2P - 1S - 2S/2P - 1S - 2S/2P - 1S - 2S/2P - Finish

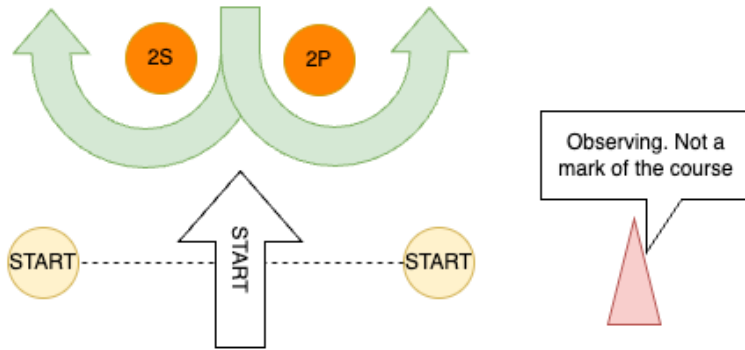


“PLEASE NOTE: These course diagrams are for example purposes only. The course, mark, start line and finish line locations are determined by the Race Committee in accordance with the RRS and LGYC NOR & SI.”



WA Course - Multiple Fleets Racing	
WA2	Start - 1 - 1A - 2S/2P - Finish
WA3	Start - 1 - 1A - 2S/2P - 1 - 1A - 2S/2P - Finish
WA4	Start - 1 - 1A - 2S/2P - 1 - 1A - 2S/2P - 1 - 1A - 2S/2P - Finish
WA5	Start - 1 - 1A - 2S/2P - 1 - 1A - 2S/2P - 1 - 1A - 2S/2P - 1 - 1A - 2S/2P - Finish

WA- Course - Multiple Fleets Racing	
WA2-	Start - 1S - 1AS - 2S/2P - Finish
WA3-	Start - 1S - 1AS - 2S/2P - 1S - 1AS - 2S/2P - Finish
WA4-	Start - 1S - 1AS - 2S/2P - 1S - 1AS - 2S/2P - 1S - 1AS - 2S/2P - Finish
WA5-	Start - 1S - 1AS - 2S/2P - 1S - 1AS - 2S/2P - 1S - 1AS - 2S/2P - 1S - 1AS - 2S/2P - Finish



“PLEASE NOTE: These course diagrams are for example purposes only. The course, mark, start line and finish line locations are determined by the Race Committee in accordance with the RRS and LGYC NOR & SI.”

Appendix 2 – Suggested Course Lengths in Statute Miles

1 Suggested Course Lengths in Statute Miles

SUGGESTED COURSE LENGTHS & TIMING

CLASS	SER. A	SER. B	SER. C	SPRING	FALL
A	4 / 1h	-	-	3.2 / 50min	-
E	4 / 1h	3.2 / 50min	-	3.2 / 50min	3.2 / 50min
C	2.8 / 50min	2.4 / 45min	-	2.4 / 45min	-
MC	2.4 / 45min	2.4 / 45min	2.4 / 45min	*0.8 / 25min	2.4 / 45min
M24	2.8 / 50min	2.4 / 45min	-	2.4 / 45min	2.4 / 45min
M15	2.4 / 45min	2.4 / 45min	-	-	2.4 / 45min
M14	2 / 45min	YOUTH 1.3 / 45min	-	-	-
X	2.4 / 50min	2 / 45min	-	-	-
IOD	1.3 / 45min	0.8 / 40min	-	-	-

*MC Spring Series is 3 races L1 course at 0.4 leg length.

Appendix 3 – Race Time Limits

CLASS	SER. A	SER. B	SER. C	SPRING	FALL
A	1hr, 15m	-	-	1 hr, 10m	-
E	1hr, 15m	1hr 5m	-	1hr 5m	1hr 5m
C	1hr, 10m	1hr	-	1hr	
MC	1hr	1hr	1hr	1hr	1hr
M24	1hr, 10m	1hr	-	1hr	1hr
M15	1hr	1hr	-	-	1hr
M14	1hr	YOUTH 1hr	-	-	-
X	1hr,10m	1hr	-	-	-
IOD	1hr	1hr	-	-	-

Appendix 4 - Awards

1 Series A – Championship

Classes A, E, C, MC, M24, M15, M14, M14 Youth: First three places

Class X: First five places, skipper and crew

IOD: First five places

2 Series B and C

Classes E, MC, M24 and M15: First three places

1. Spring and Fall Series

All classes: First two places

2. Perpetual Trophies Race Schedule

CLASS A

The trophy is awarded to the boat with the best combined score for the day, unless otherwise noted. In case of a tie, the trophy is awarded to the boat that finishes higher in the second race. The Dr. Otto L. Schmidt Memorial Trophy is awarded to the boat with the best score in four races held over two days with a third day for make-up races. At least three races must be completed to award the Schmidt Trophy.

Dr. Otto L. Schmidt day 1	A 1, 2	5/26	Gloria	A 13, 14	7/07
Dr. Otto L. Schmidt day 2	A 3, 4	6/02	I-4 Model	A 15, 16	7/14
Schmidt make-up	A 5, 6	6/09	Mayer-Gifford	A 17, 18	7/21
Buddy & Gloria Melges	A 7	6/16			
Hillcrest	A 8	6/16	Commodore's Cup	A 19, 20	7/28
Oak Lodge	A 9, 10	6/23	Sheridan Prize	NFP	8/29
Mr. and Mrs. H. N. Gifford	A 11, 12	6/30	Charles H. Wacker	NFP	9/07

CLASS E

The Harry Hayner Bliss Memorial Trophy is awarded to the boat with the best score in four races held over two days with a third day for make-up races. At least three races must be completed to award the Bliss Trophy.

Millard "Bus" Mogg	A1	5/24	1932 ILYA Regatta LGYC	A 12	7/12
Walter M. Colman	A 2	5/24	H. R. Hough	A 13	7/19
Harry Hayner Bliss day 1	A 3, 4	5/31	Conrad C. Niehoff	A 15	7/26
Harry Hayner Bliss day 2	A 5, 6	6/07	Clarence W. Sills	A 16	7/26
Bliss make-up	A 7, 8	6/21	Frozen Asset	A 17	8/02
A. F. Gartz Jr. Memorial	A 9	6/28	Expert Challenge	A 18	8/02
Kirschschlager	A 10	6/28	B. P. Adams Post-Season	F 1	8/19
Folly Prize	A 11	7/12			

CLASS C

The Pike I-3 Trophy is awarded to the boat with the best score in four races held over two days with a third day for make-up races. At least three races must be completed to award the Pike I-3 Trophy.

Bertha Williams Memorial	A 1	5/30	John J. Mitchell	A 12	7/18
Pike I-3 day 1	A 3, 4	6/06	Martin A. Ryerson	A 13	7/25
Pike I-3 day 2	A 5, 6	6/20	L. Z. Leiter	A 14	7/25
Pike I-3 make-up	A 7, 8	6/27	Mr. and Mrs. C. S. Johnson	A 15	8/01
Pikewood	A 9	7/11	Stan Johnson Jr. Memorial	A 16	8/01
Dick Novotny	A 10	7/11	Cameron	A 17	8/08
Jesse E. Hall	A 11	7/18			

CLASS MC

The Stay at Home Trophy is awarded to the boat with the best score in three races held over three days.

Imp V	A 1	5/30	Mullholland (Master)	A13	7/25
Morrissy	A 3	6/06	Allan Brown Memorial	A15	8/01
Carlson	A 5	6/20	Sea Hawk	A22	8/22
Marra	A 7	6/27	Stay at Home day 1	ST 1	8/19
Soar with the Eagles	A 9	7/11	Stay at Home day 2	ST 2	8/26
Huck Trophy (Master)	A 11	7/18	Stay at Home day 3	ST 3	8/28

MELGES 24

George H. Kiefer	A 3	6/05	Mega M-20 Crew	A 11	7/10
Commodore Hough	A 5	6/19	W. S. Reier	A 13	7/17
Class V Series B	A 7	6/26	Robert G. Ferris Memorial	A 15	7/24
Mogg	A 9	7/03			